

VANDA FULL FLUSHBOX AND FLUSH FIT TRACK
Sample Installation Detail

Product Code Ref :

VA-FF-0001 (Flush Fit)
VA-FB-100 (Flushbox)



VANDA HOLDINGS LTD
Unit G, 166 Marua Road
Ellerslie, Auckland
0800 826 326
admin@vanda.co.nz
www.vanda.co.nz

PRODUCT :

Vanda Full Flushbox and Flush Fit Track
VA-FF-0001
VA-FB-100

DESCRIPTION :

Single Recessed aluminium box and cover plate designed to be recessed into ceiling to conceal blind. Blind runs close to window. The Flushfit aluminium track is designed flush to the ceiling with a minimal flange.

MATERIAL :

Powder coated aluminium in standard Vanda White or any Dulux powdercoat colour.

NOTES :

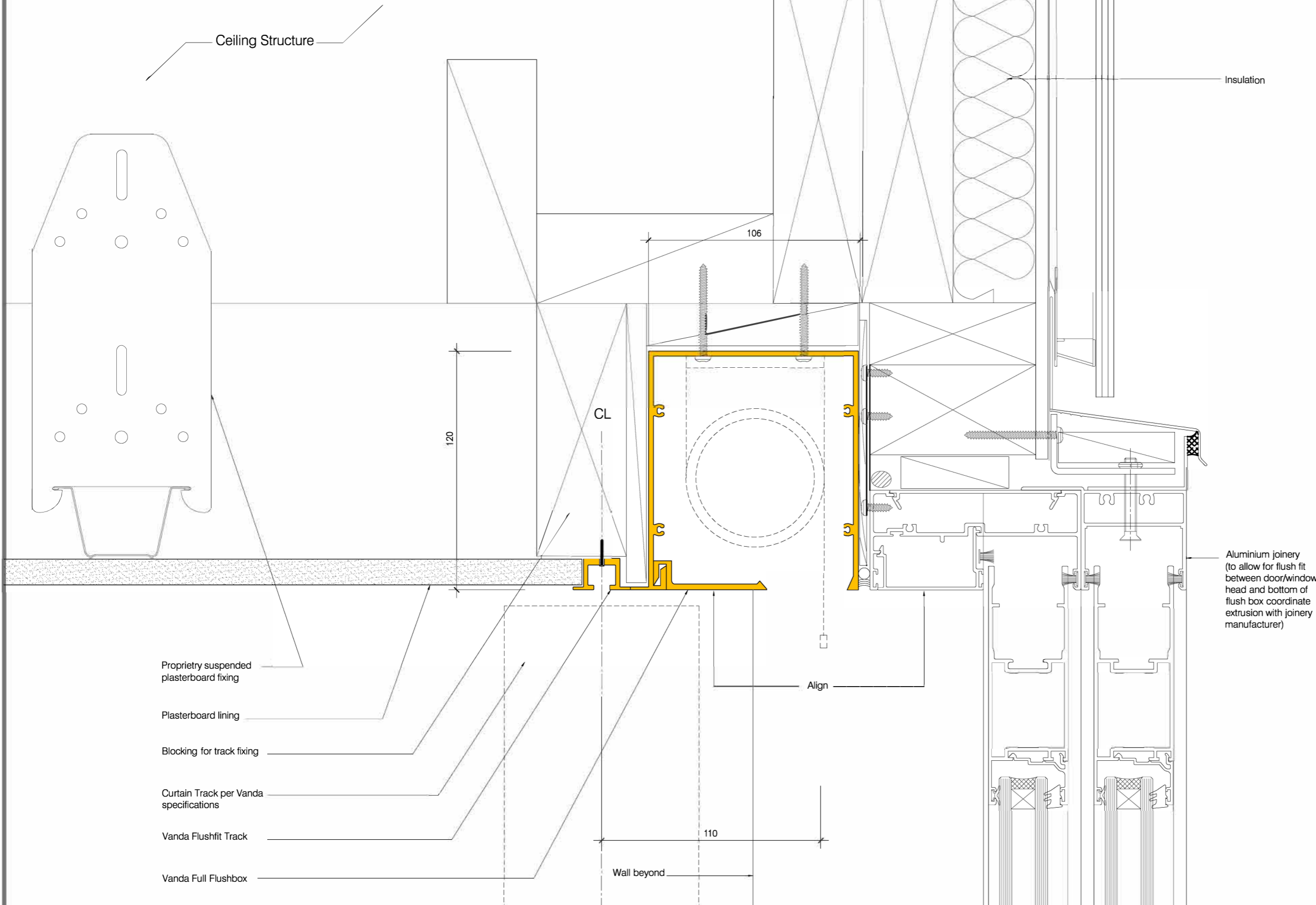
Ensure there is space for window/door handles.

Flushfit Track flange butts up next to Flushbox Flange. Contractors to pack out space between track and box 13mm to help locate both sections.

DISCLAIMER :

Note that the architectural detail is shown for reference only. All architectural details shown shall not be used for construction, and shall be drawn by an architect according to the specific building project and application. Drawing intent shows the possible placement of Vanda products within a building context.

1:2 Scale (A3)



Aluminium joinery
(to allow for flush fit
between door/window
head and bottom of
flush box coordinate
extrusion with joinery
manufacturer)